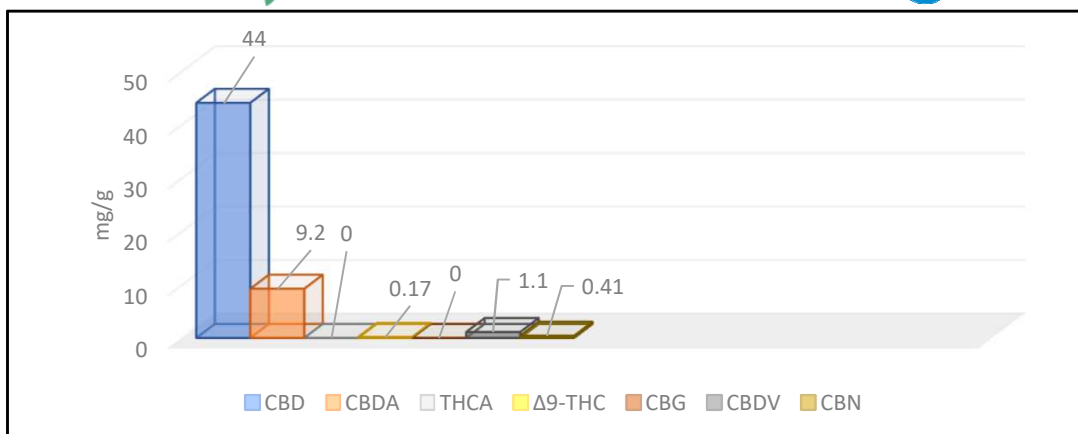


# Certificate of analysis 333/2019/050

Analyzed by E&H Services, Inc.  
The holder of a permit number 127/2016 for the handling of addictive substances, according to Law 167/1998, issued by the Ministry of Health  
Czech Republic



Date of issue 01.04.2019  
Responsible researcher MSc.Jiří Lisník

SAMPLE: 300	800 Entourage Batch 24	
Compound	Values (mg/g)	Mass %
CBD	44	4.4
CBDA	9.2	0.92
THCA	<0.060	<0.0060
Δ9-THC	0.17	0.017
CBG	<0.10	<0.010
CBDV	1.1	0.11
CBN	0.41	0.041
Pb	<0,00010	<0,000010
Cd	<0,00010	<0,000010
As	<0,00010	<0,000010
Hg	<0,000010	<0,0000010

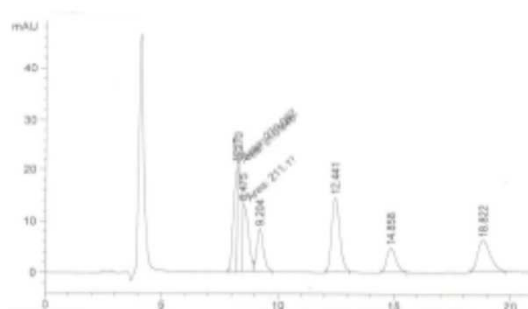


Fig. 1 LC-UV Standard chromatogram

## Analytical procedure: Homogenization, extraction in methanol (or acetone), analysis on LC-UV

This report and all information herein has been confirmed by a certified lab, and are based on protocol of analysis no.333/2019 and shall not be reproduced, except in its entirety, without the written consent of laboratory. The report is for informational purposes only and should not be used to diagnose, treat, or prevent any medical related symptoms. Results are applicable only for samples tested, and for the specific tests conducted. All tests carried are done so under strict certified laboratory protocols, guidelines and supervision. Contact us for more information at [www.cannabilab.eu](http://www.cannabilab.eu)

Dr. Tomas Ocelka, head of laboratory



E&H  
Services, a.s.  
Budějovická 618/53, Krč, 140 00 Praha 4  
Česká republika  
IČ 24718602 • DIČ CZ24718602