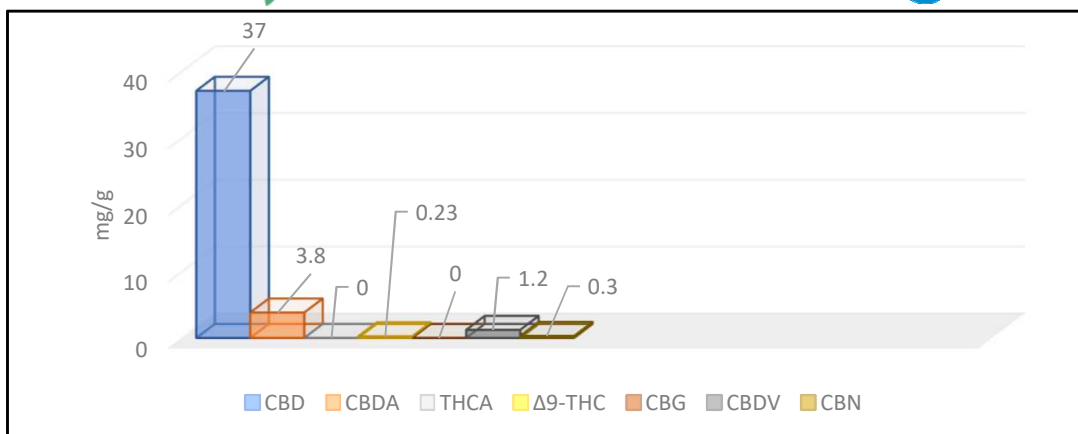


Certificate of analysis 120/2019/031

Analyzed by E&H Services, Inc.
The holder of a permit number 127/2016 for the handling of addictive substances, according to Law 167/1998, issued by the Ministry of Health
Czech Republic



Date of issue 06.03.2019
Responsible researcher MSc.Jiří Lisník

SAMPLE: 161	800 Entourage Batch 24	
Compound	Values (mg/g)	Mass %
CBD	37	3.7
CBDA	3.8	0.38
THCA	<0.060	<0.0060
Δ9-THC	0.23	0.023
CBG	<0.10	<0.010
CBDV	1.2	0.12
CBN	0.29	0.029

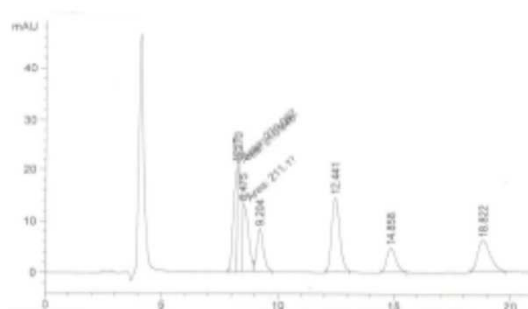


Fig. 1 LC-UV Standard chromatogram

Analytical procedure: Homogenization, extraction in methanol (or acetone), analysis on LC-UV

This report and all information herein has been confirmed by a certified lab, and are based on protocol of analysis no.120/2019 and shall not be reproduced, except in its entirety, without the written consent of laboratory. The report is for informational purposes only and should not be used to diagnose, treat, or prevent any medical related symptoms. Results are applicable only for samples tested, and for the specific tests conducted. All tests carried are done so under strict certified laboratory protocols, guidelines and supervision. Contact us for more information at www.cannabilab.eu

Dr. Tomas Ocelka, head of laboratory



Budějovická 618/53, Krč, 140 00 Praha 4
Česká republika
IČ 24718602 • DIČ CZ24718602