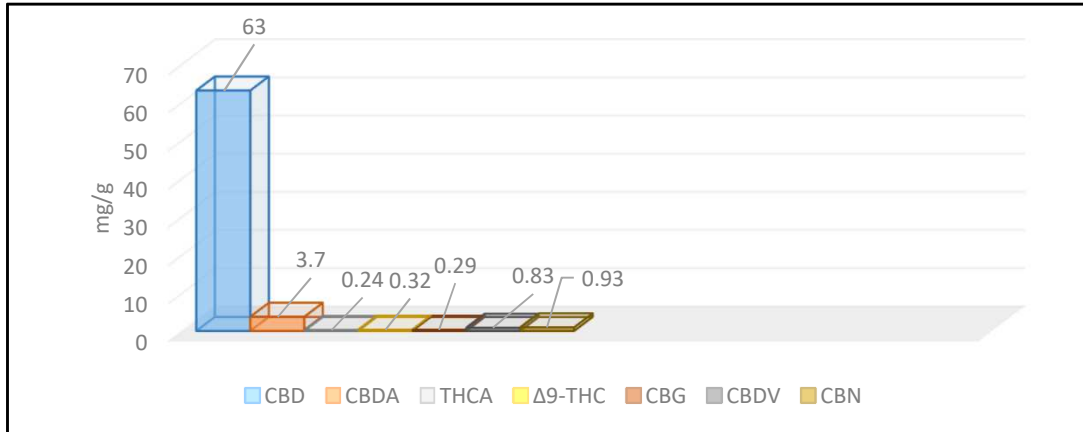


# Certificate of analysis 1468/2018/210

Analyzed by E&H Services, Inc.  
 The holder of a permit number 127/2016 for the handling of addictive substances, according to Law 167/1998, issued by the Ministry of Health  
 Czech Republic



Date of issue 17.12.2018  
 Responsible researcher MSc.Jiří Lisník

SAMPLE: 1898	800 Batch 17	
Compound	Values (mg/g)	Mass %
CBD	63	6.3
CBDA	3.7	0.37
THCA	0.24	0.024
Δ9-THC	0.32	0.032
CBG	0.29	0.029
CBDV	0.83	0.083
CBN	0.93	0.093

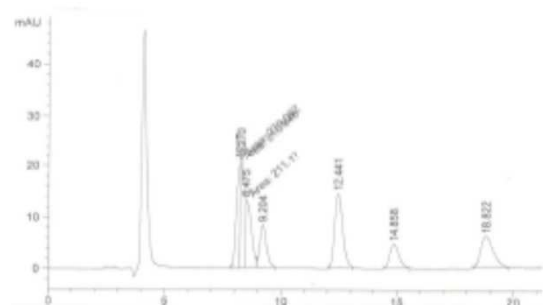


Fig. 1 LC-UV Standard chromatogram

### Analytical procedure: Homogenization, extraction in methanol (or acetone), analysis on LC-UV

This report and all information herein has been confirmed by a certified lab, and are based on protocol of analysis no.1468/2018 and shall not be reproduced, except in its entirety, without the written consent of laboratory. The report is for informational purposes only and should not be used to diagnose, treat, or prevent any medical related symptoms. Results are applicable only for samples tested, and for the specific tests conducted. All tests carried are done so under strict certified laboratory protocols, guidelines and supervision. Contact us for more information at [www.cannabilab.eu](http://www.cannabilab.eu)

Dr. Tomas Ocelka, head of laboratory



E&H  
Services, Inc.  
Žitná 1633/47, 110 00 Praha 1 - Nové Město  
Czech Republic  
ID 24718602 • VAT ID CZ24718602