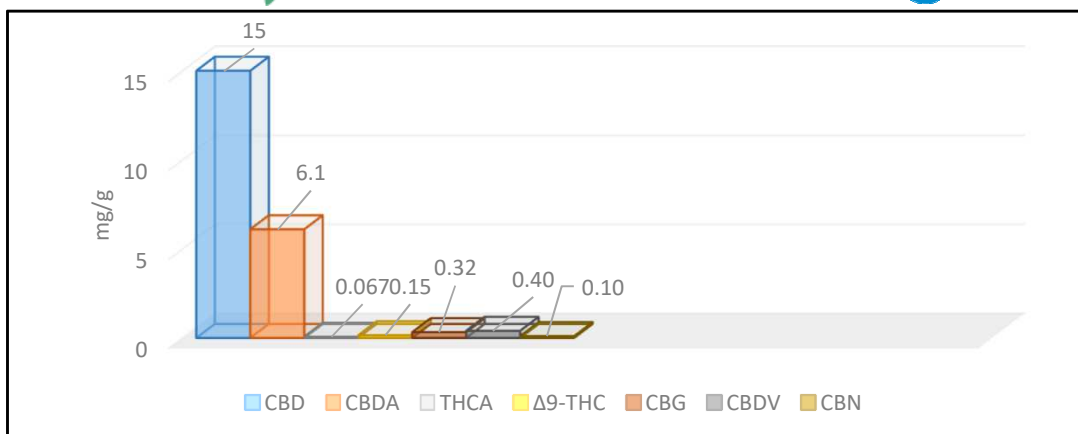


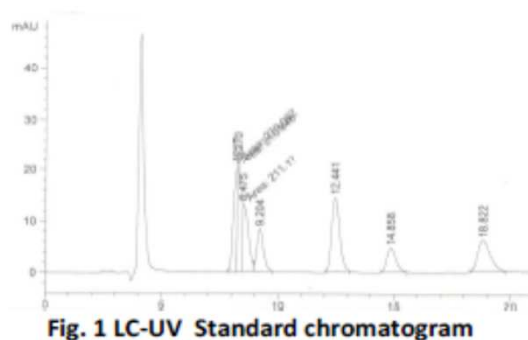
Certificate of analysis 1468/2018/211

Analyzed by E&H Services, Inc.
The holder of a permit number 127/2016 for the handling of addictive substances, according to Law 167/1998, issued by the Ministry of Health
Czech Republic



Date of issue 17.12.2018
Responsible researcher MSc.Jiří Lisník

SAMPLE: 1899	300 Batch 99	
Compound	Values (mg/g)	Mass %
CBD	15	1.5
CBDA	6.1	0.61
THCA	0.067	0.0067
Δ9-THC	0.15	0.015
CBG	0.32	0.032
CBDV	0.40	0.040
CBN	0.10	0.010



Analytical procedure: Homogenization, extraction in methanol (or acetone), analysis on LC-UV

This report and all information herein has been confirmed by a certified lab, and are based on protocol of analysis no.1468/2018 and shall not be reproduced, except in its entirety, without the written consent of laboratory. The report is for informational purposes only and should not be used to diagnose, treat, or prevent any medical related symptoms. Results are applicable only for samples tested, and for the specific tests conducted. All tests carried are done so under strict certified laboratory protocols, guidelines and supervision. Contact us for more information at www.cannabilab.eu

Dr. Tomas Ocelka, head of laboratory



Žitná 1633/47, 110 00 Praha 1 - Nové Město
Czech Republic
ID 24718602 • VAT ID CZ24718602