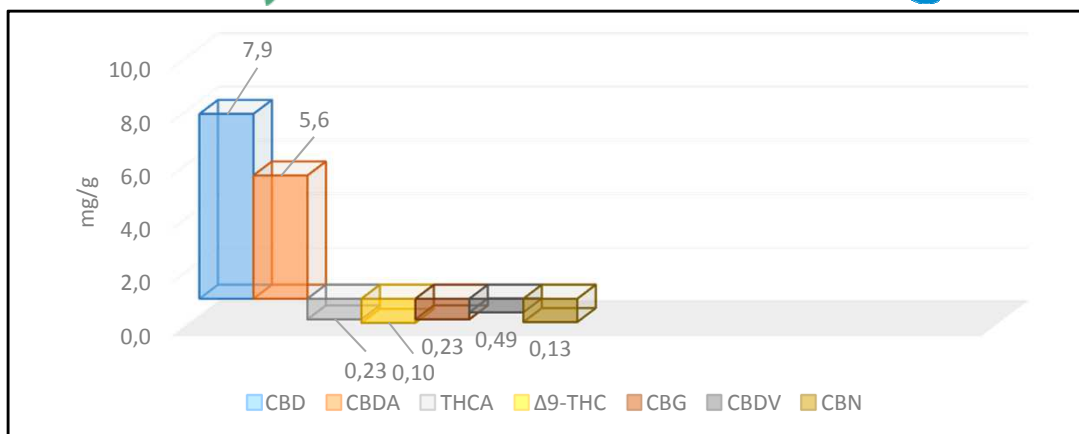


# Certificate of analysis 817/2018/075

Analyzed by E&H Services, Inc.  
The holder of a permit number 127/2016 for the handling of addictive substances, according to Law 167/1998, issued by the Ministry of Health  
Czech Republic



Date of issue 9.8.2018  
Responsible researcher MSc.Jiří Lisník

SAMPLE: 984	150 DUTCH BATCH 14	
Compound	Values (mg/g)	Mass %
CBD	7,9	0,79
CBDA	5,6	0,56
THCA	0,23	0,023
Δ9-THC	0,10	0,010
CBG	0,23	0,023
CBDV	0,49	0,049
CBN	0,13	0,013

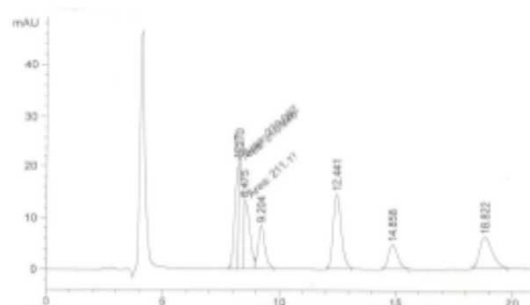


Fig. 1 LC-UV Standard chromatogram

## Analytical procedure: Homogenization, extraction in methanol (or acetone), analysis on LC-UV

This report and all information herein has been confirmed by a certified lab, and are based on protocol of analysis no.817/2018 and shall not be reproduced, except in its entirety, without the written consent of laboratory. The report is for informational purposes only and should not be used to diagnose, treat, or prevent any medical related symptoms. Results are applicable only for samples tested, and for the specific tests conducted. All tests carried are done so under strict certified laboratory protocols, guidelines and supervision. Contact us for more information at [www.cannabilab.eu](http://www.cannabilab.eu)

Dr. Tomas Ocelka, head of laboratory



Žitná 1633/47, 110 00 Praha 1 - Nové Město  
Czech Republic  
ID 24718602 · VAT ID CZ24718602