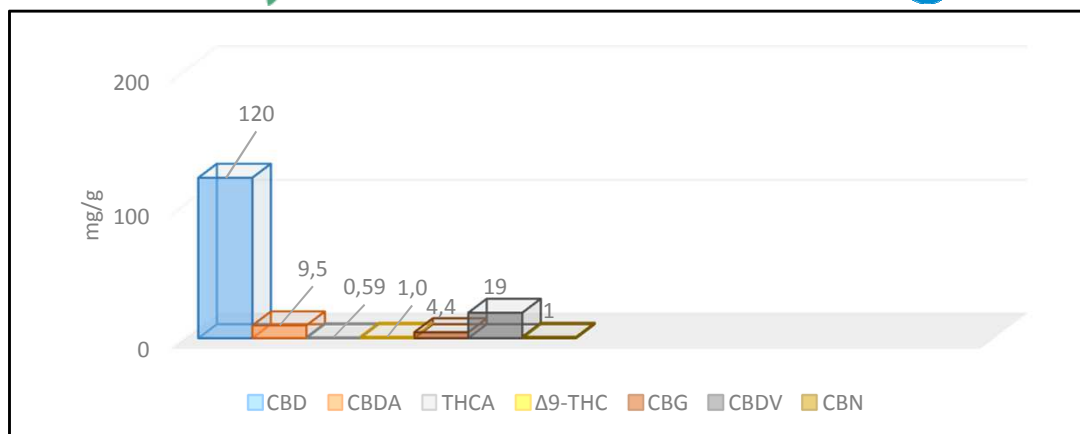


Certificate of analysis 712/2018/041

Analyzed by E&H Services, Inc.
The holder of a permit number 127/2016 for the handling of addictive substances, according to Law 167/1998, issued by the Ministry of Health
Czech Republic



Date of issue: 19.7.2018
Responsible researcher: Dr. Kurková

SAMPLE: 863	Entourage 2000 Batch 12	
Compound	Values (mg/g)	Mass %
CBD	120	12
CBDA	9,5	0,95
THCA	0,59	0,059
Δ9-THC	1,0	0,10
CBG	4,4	0,44
CBDV	19	1,9
CBN	0,61	0,061
Pb	<0,00010	<0,000010
Cd	<0,00010	<0,000010
As	<0,00020	<0,000020
Hg	<0,00001	<0,000001

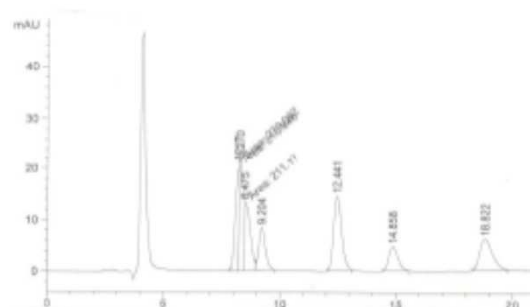


Fig. 1 LC-UV Standard chromatogram

Analytical procedure: Homogonization, extraction in methanol (or acetone), analysis on LC-UV

This report and all information herein has been confirmed by a certified lab, and are based on protocol of analysis no.712/2018 and shall not be reproduced, except in its entirety, without the written consent of laboratory. The report is for informational purposes only and should not be used to diagnose, treat, or prevent any medical related symptoms. Results are applicable only for samples tested, and for the specific tests conducted. All tests carried are done so under strict certified laboratory protocols, guidelines and supervision. Contact us for more information at www.cannabilab.eu

Dr. Tomas Ocelka, head of laboratory



E&H
Services, Inc.
Žitná 1633/47, 110 00 Praha 1 - Nové Město
Czech Republic
ID 24718602 • VAT ID CZ24718602