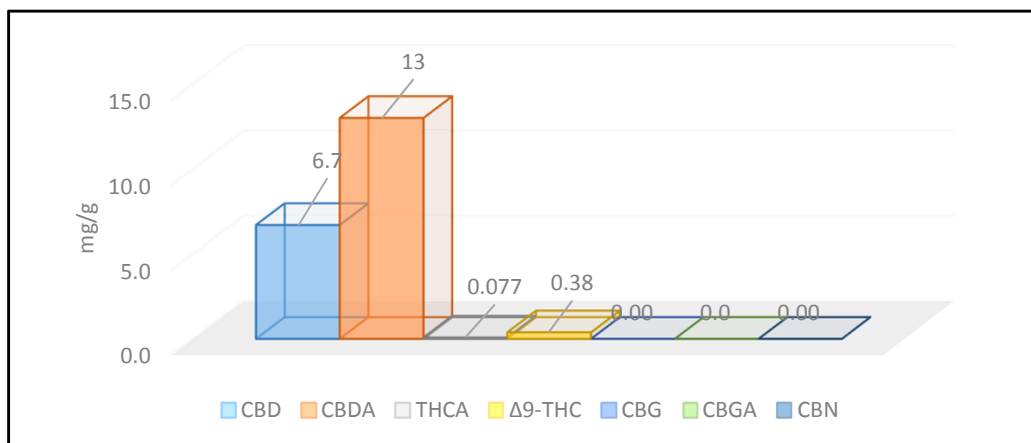


Certificate of analysis 222/2017/202

LOVE CBD LTD

Analyzed by E&H Services, Inc.
The holder of a permit number 127/2016 for the handling of addictive substances, according to Law 167/1998, issued by the Ministry of Health
Czech Republic



Date of issue 9.5.2017
Responsible researcher Dr. Kurková

SAMPLE: 363	balm	
Compound	Values (mg/g)	Mass %
CBD	6.7	0.67
CBDA	13	1.3
THCA	0.077	0.0077
Δ9-THC	0.38	0.038
CBG	< 0.060	< 0.0060
CBGA	< 0.060	< 0.0060
CBN	< 0.060	< 0.0060

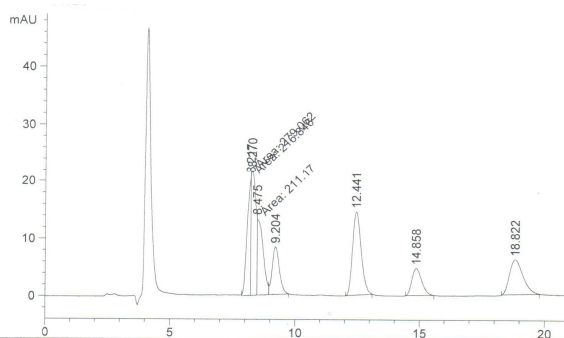


Fig. 1 LC-UV Standard chromatogram

Analytical procedure: Homogenization, extraction in methanol (or acetone), analysis on LC-UV.

This report and all information herein has been confirmed by a certified lab, and are based on protocol of analysis no.222/2017 and shall not be reproduced, except in its entirety, without the written consent of laboratory. The report is for informational purposes only and should not be used to diagnose, treat, or prevent any medical related symptoms. Results are applicable only for samples tested, and for the specific tests conducted. All tests carried are done so under strict certified laboratory protocols, guidelines and supervision. Contact us for more information at www.cannabilab.eu

Certificate of analysis 222/2017/202

LOVE CBD LTD

Analyzed by E&H Services, Inc.
The holder of a permit number 127/2016 for the handling of
addictive substances, according to Law 167/1998, issued by the
Ministry of Health Czech Republic

SAMPLE: 363	balm	
Compound	Values (mg/g)	limits (mg/g)*
Mercury	< 0.00001	0.0001
Arsenic	< 0.0001	-
Cadmium	< 0.0001	0.0010
Lead	< 0.0001	0.0030

* Commission regulation (EC) no. 629/2008

Analytical procedure: Mineralization, determination on ICP-OES and AMA

Microbial analysis:

Escherichia coli	CFU/g	negative
Staphylococcus aureus	CFU/g	negative
Enterobacteriaceae	CFU/g	negative
Coagulase-positive staphylococci	CFU/g (ml)	negative
Listeria monocytogenes	CFU/g (ml)	negative
Yeasts and Moulds	CFU/g (ml)	negative
Salmonella	CFU/25g	negative

This report and all information herein has been confirmed by a certified lab, and are based on protocol of analysis no.222/2017 and shall not be reproduced, except in its entirety, without the written consent of laboratory. The report is for informational purposes only and should not be used to diagnose, treat, or prevent any medical related symptoms. Results are applicable only for samples tested, and for the specific tests conducted. All tests carried are done so under strict certified laboratory protocols, guidelines and supervision. Contact us for more information at www.cannabilab.eu



E&H
Services, Inc.
Žitná 1633/47, 110 00 Praha 1 - Nové Město
Czech Republic
ID 24718602 • VAT ID CZ24718602

Dr. Tomas Ocelka, head of laboratory